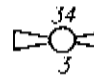


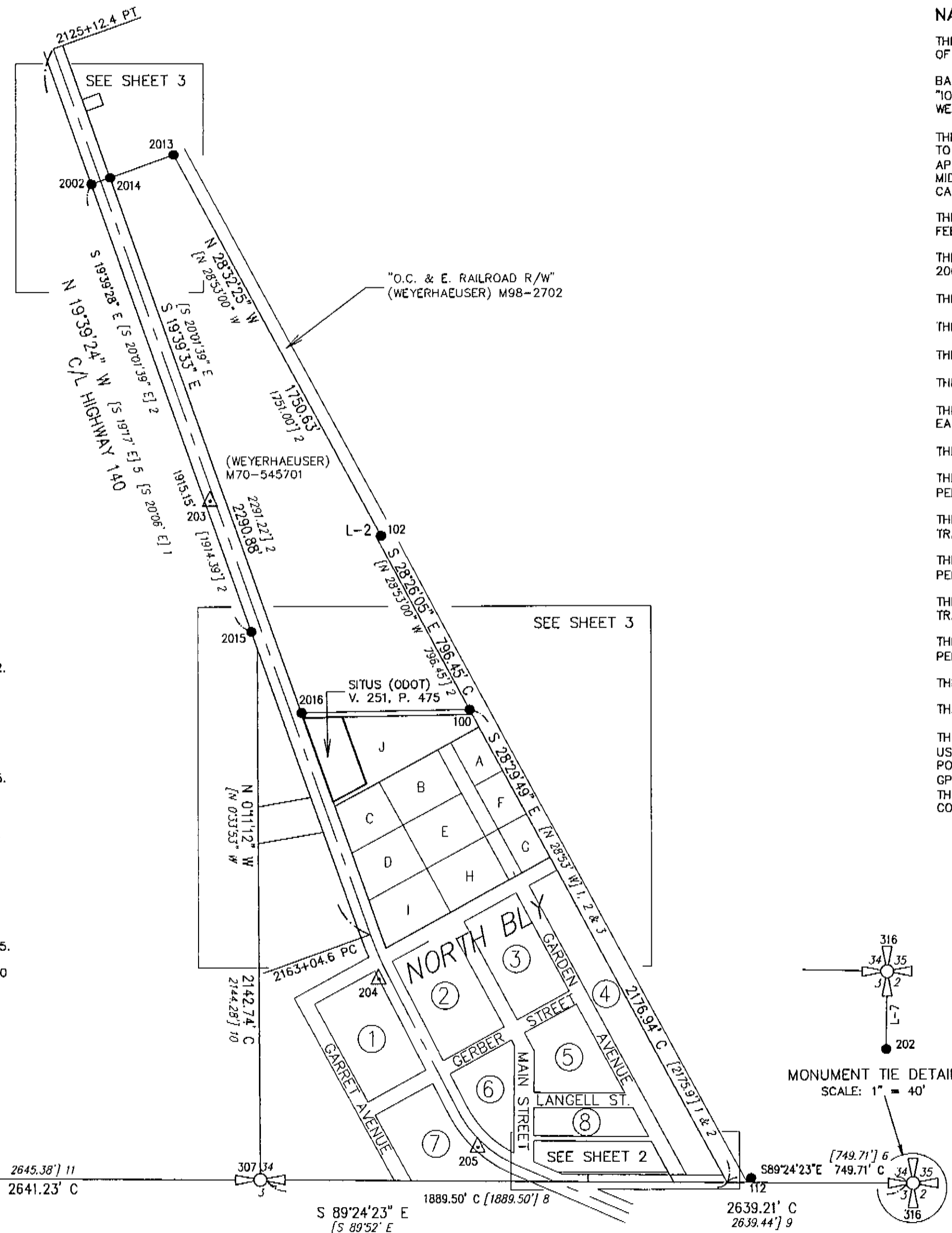


RECORD OF SURVEY

IN SE 1/4 OF SECTION 34, TOWNSHIP 36 SOUTH, RANGE 14 EAST OF THE WILLAMETTE MERIDIAN
 CITY OF BLY, KLAMATH COUNTY, OREGON
 PROPERTY OWNER: OREGON DEPARTMENT OF TRANSPORTATION

- 307.  COMPUTED G.L.O. MONUMENT, AS NOTED IN POINT TABLE ON SHEET 2.
- 114.  FOUND G.L.O. MONUMENT, AS NOTED IN POINT TABLE ON SHEET 2.
- 316.  COMPUTED G.L.O. MONUMENT, AS NOTED IN POINT TABLE ON SHEET 2.



NARRATIVE

THE PURPOSE OF THIS SURVEY AND MAP WAS TO LOCATE AND/OR ESTABLISH AND ILLUSTRATE THE BOUNDARY OF A TRACT OF LAND DESCRIBED AND RECORDED IN V. 251, P. 475, KLAMATH COUNTY CLERK RECORDS.

BASIS OF BEARINGS AND CONTROL WAS OBTAINED BY RAPID STATIC GPS LES TO NGS CONTROL MONUMENTS "IODINE" AND "ROCOCO" AND TRANSFORMATION TO STATE PLANE COORDINATES (NAD83 3602 OR-S). VECTORS WERE PROCESSED AND ADJUSTED BY LEAST SQUARES USING TOPCON TOOL'S VERSION 6.11 SOFTWARE.

THE CENTER LINE ALIGNMENT OF STATE HIGHWAY 140 WAS ESTABLISHED FROM ENGINEER'S STATION 2125+12.4 TO 2163+04.6 PER ODOT DRAWING 18-14-12 USING POINTS 2002, 110, 104, 2015, 2051, AND 2052 ALONG THE APPROXIMATE SOUTHWESTERLY R/W FOR A BEST FIT LINE OF DIRECTION. SAID LINE WAS OFFSET TO THE MID-POINT BETWEEN POINTS 2002 AND 2014. RECORD COURSES FROM S. D ODOT MAP WERE USED TO CALCULATE THE REMAINDER OF THE ALIGNMENT SHOWN.

THE WEST LINE OF THE SUBJECT TRACT WAS ESTABLISHED BY OFFSETTING THE CENTER LINE ALIGNMENT 40.00 FEET.

THE INITIAL POINT OF THE PLAT OF NORTH BLY WAS ESTABLISHED AS A COMPUTED POINT FROM POINTS 104, 2068, AND 2069, AS SHOWN ON SHEET 2.

THE EAST LINE OF LOT 'J', WAS ESTABLISHED FROM POINT 100 AND COMPUTED INITIAL POINT OF NORTH BLY.

THE NORTH LINE OF LOT 'J' WAS ESTABLISHED FROM POINTS 2016 AND 100.

THE NORTHWEST CORNER OF LOT 'J' WAS CALCULATED BY PROJECTING THE NORTH LINE TO THE WEST LINE.

THE NORTHEAST CORNER OF LOT 'J' WAS HELD AS POINT 100.

THE SOUTHEAST CORNER OF LOT 'J' WAS CALCULATED BY SINGLE-PROPORTIONATE MEASUREMENT ALONG THE EAST LINE FROM POINT 100 TO CALCULATED INITIAL POINT OF NORTH BLY.

THE SOUTHWEST CORNER OF LOT 'J' WAS CALCULATED BY RECORD PLAT DISTANCE ALONG SAID WEST LINE.

THE NORTH LINE OF THE SUBJECT TRACT WAS CALCULATED AS A LINE MEASURING 20.00 FEET SOUTH AND PERPENDICULAR FROM THE BEFORE MENTIONED NORTH LINE OF LOT 'J'.

THE NORTHWEST CORNER OF THE SUBJECT TRACT WAS SET BY INTERSECTING THE NORTH LINE OF THE SUBJECT TRACT WITH THE WEST LINE OF LOT 'J'.

THE EAST LINE OF THE SUBJECT TRACT WAS CALCULATED AS A LINE MEASURING 150.00 FEET EAST AND PERPENDICULAR FROM THE WEST LINE OF LOT 'J'.

THE NORTHEAST CORNER OF THE SUBJECT TRACT WAS SET BY INTERSECTING THE NORTH LINE OF THE SUBJECT TRACT WITH THE EAST LINE OF THE SUBJECT TRACT.

THE SOUTH LINE OF THE SUBJECT TRACT WAS CALCULATED AS A LINE MEASURING 20.00 FEET NORTH AND PERPENDICULAR FROM THE SOUTH LINE OF LOT 'J'.

THE SOUTHEAST CORNER WAS SET BY INTERSECTING THE EAST LINE AND SOUTH LINE OF THE SUBJECT TRACT.

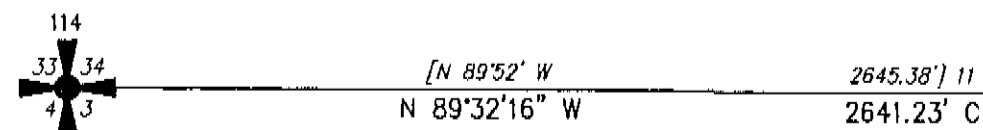
THE SOUTHWEST CORNER WAS SET BY INTERSECTING THE SOUTH LINE AND WEST LINE OF THE SUBJECT TRACT.

THE FIELD RECONNAISSANCE WAS PERFORMED BY MYSELF AND DENISE MONTGOMERY 11/09/06 TO 11/11/06 USING TWO TOPCON HIPER LITE DUAL FREQUENCY GPS RECEIVERS AND A 33-FOOT STEEL ENGINEER'S TAPE. POINT 2063 WAS TIED BY SETTING UP AND TAKING SIDE SHOTS FROM POINT 208 AND 210 USING A TOPCON GPT 3003 TOTAL STATION AND TWO BI-POD SUPPORTED PRISM POLES. MONUMENTS WERE SET 4/16/07 USING THE SAME RECEIVERS WITH A TDS RANGER 300T DATA COLLECTOR BY REAL-TIME KINEMATIC "RTK" METHOD. CONTROL POINTS FOR RTK SURVEY WERE 100, 2015 AND 2052.

RECORD SURVEY TABLE

- 1 = PLAT OF NORTH BLY RECORDED IN VOLUME 5, PAGE 92, KLAMATH COUNTY SUBDIVISION PLAT RECORDS IN 7/1928
- 2 = RECORD OF SURVEY BY DORTCH RECORDED AS CS 1350 IN 2/1969.
- 3 = RECORD OF SURVEY BY GRESDEL RECORDED AS CS 1733 IN 10/1972.
- 4 = RECORD OF SURVEY BY ENSOR RECORDED AS CS 6049 IN 4/1997.
- 5 = ODOT ALIGNMENT MAP OF STATE HIGHWAY 140 FILED AS 18-14-12.
- 6 = RECORD OF SURVEY BY DORTCH RECORDED AS CS 1759 IN 11/1972.
- 7 = RECORD OF SURVEY BY GRESDEL RECORDED AS CS 7156 IN 11/2005.
- 8 = RECORD OF SURVEY BY DORTCH RECORDED AS CS 1347 IN 2/1969.
- 9 = RECORD OF SURVEY BY DORTCH RECORDED AS CS 1737 IN 10/1972.
- 10 = RECORD OF SURVEY BY GRESDEL RECORDED AS CS 2422 IN 4/1977.
- 11 = RECORD OF SURVEY BY WALES RECORDED AS CS 2095 IN 4/1975.
- 12 = RECORD OF SURVEY BY GRESDEL RECORDED AS CS 1371 IN 4/1969.
- 13 = PARTITION PLAT 43-92 BY RITTER RECORDED AS CS 5460 IN 11/1995.
- 14 = PROPERTY LINE ADJUSTMENT 22-97 BY OLSEN RECORDED AS CS 6110 IN 10/1997.

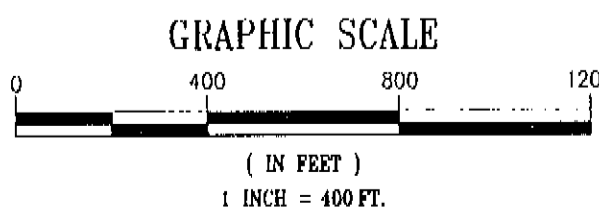
FILED
 IN THE OFFICE OF THE KLAMATH
 COUNTY SURVEYOR THIS 17 DAY
 OF APRIL 2007



INDEX OF SHEETS

- SHEET 1 COVER SHEET AND NARRATIVE
- SHEET 2 POINT TABLES AND CONTROL TIE DETAIL
- SHEET 3 LINE TABLES AND CONTROL TIE DETAILS

I, SCOTT D. MONTGOMERY, HEREBY CERTIFY THAT THIS SURVEY WAS PREPARED USING AN HP CARTRIDGE #51640A ON #JPC4M1 POLYESTER FILM.



GENERAL NOTES

1. ALL MONUMENTS FOUND WERE ERECT, ±0.3' LEVEL WITH SURFACE, IN GOOD CONDITION, AND USABLE, UNLESS OTHERWISE NOTED HEREON.
2. POINTS SHOWN WITH "+0.4" OR "-0.4" REFLECT THE DISTANCE ABOVE "+" OR BELOW "-" SURFACE LEVEL.
3. POINTS SHOWN WITH "NE" COORDINATES REFLECT CARDINAL DISTANCES FROM COMPUTED OR TRUE CORNERS.
4. ODOT = OREGON DEPARTMENT OF TRANSPORTATION

SHEET 1 OF 3

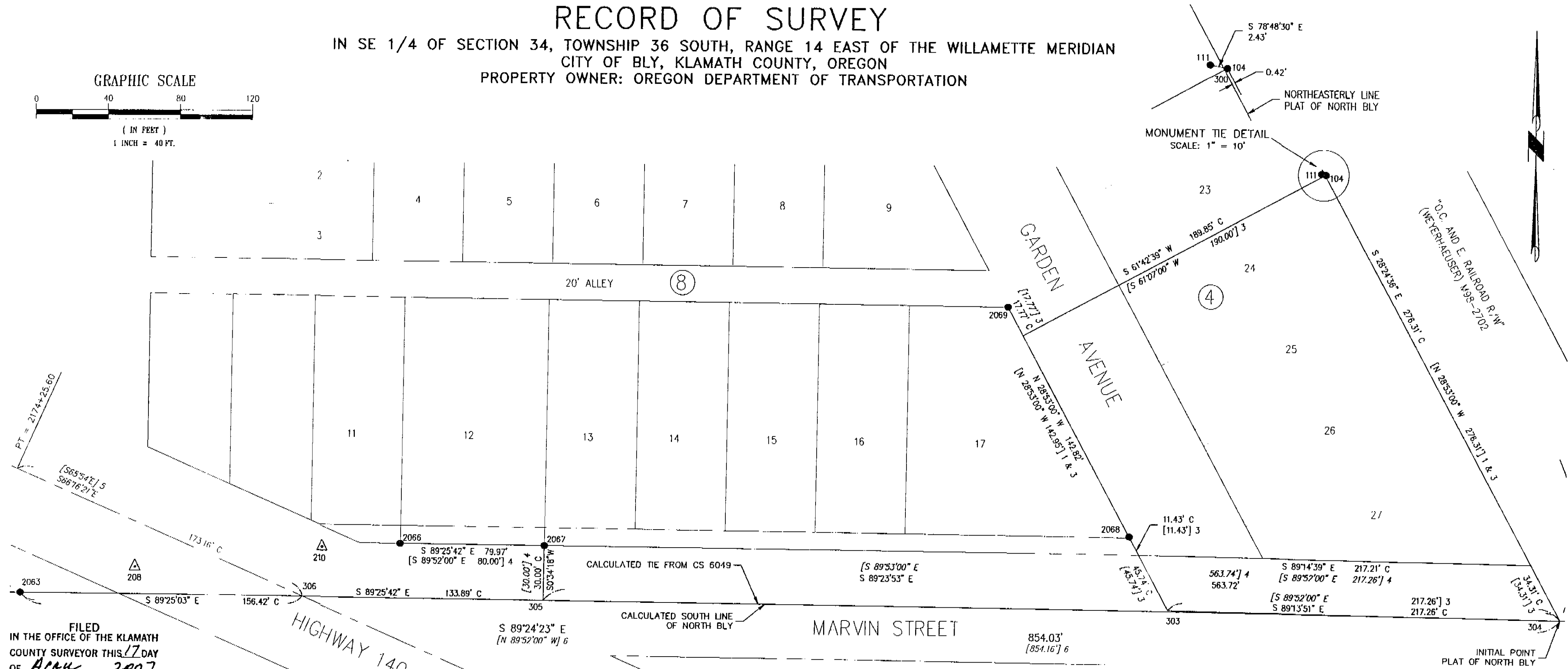
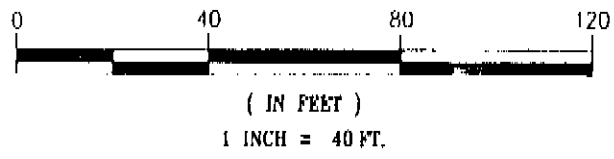
DRAWING NO.: ROS.dwg	PREPARED FOR AND AT THE REQUEST OF	JOB NO.	06-039
DATE: APRIL 12, 2007	OREGON DEPARTMENT OF TRANSPORTATION	SCALE	SHOWN
REGISTERED PROFESSIONAL LAND SURVEYOR	LIABILITY FOR THIS SURVEY IS EXPRESSLY LIMITED TO SAID PERSON OR PERSONS.	CHECKED BY:	SDM
OREGON JANUARY 11, 2005	LOCATION:	DRAWN BY:	SDM
SCOTT D. MONTGOMERY 51,324	TAX LOT 1700 36 14 34DB	LEGEND:	RB = REBAR IP = IRON PIPE
RENEWAL: 12/31/2008	SEC 34, T 36S, R 14E, W.M. CITY OF BLY, KLAMATH COUNTY, OREGON	() = DEED RECORD	V = VOLUME P. = PAGE
ALL POINTS ENGINEERING & SURVEYING		[] = SURVEY RECORD	CS = COUNTY SURVEY #
P.O. BOX 2086 TERREBONNE, OREGON 97716-0286		△ ODOT CONTROL POINT	L = LEFT R = RIGHT
PHONE (541) 548-5833 www.APEandS.com		● MONUMENT FOUND AS NOTED	YPC = YELLOW PLASTIC CAP
		○ #5 X 24" RB SET & RPC	RPC = RED PLASTIC CAP
		▲ APES, EXCEPT AS NOTED	R/W = RIGHT-OF-WAY

7389

RECORD OF SURVEY

IN SE 1/4 OF SECTION 34, TOWNSHIP 36 SOUTH, RANGE 14 EAST OF THE WILLAMETTE MERIDIAN
CITY OF BLY, KLAMATH COUNTY, OREGON
PROPERTY OWNER: OREGON DEPARTMENT OF TRANSPORTATION

GRAPHIC SCALE



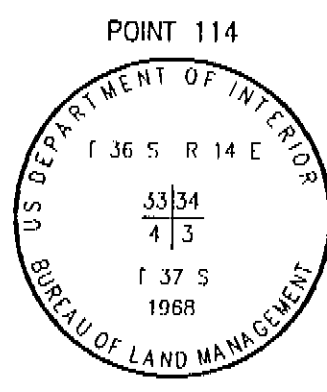
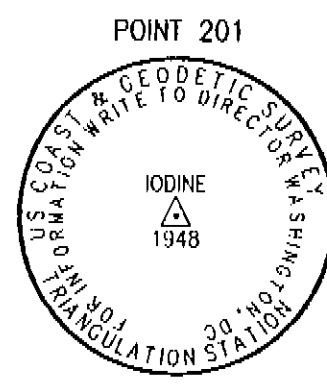
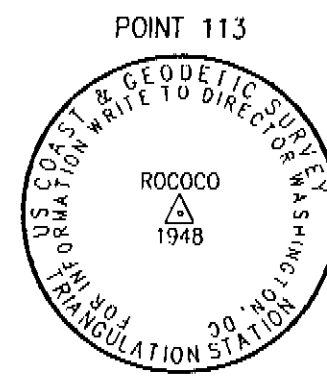
FILED
IN THE OFFICE OF THE KLAMATH
COUNTY SURVEYOR THIS 17 DAY
OF APRIL 2007

TIED POINTS

POINT	DESCRIPTION	RECORD	NORTHING (I-FT)	EASTING (I-FT)	Δ NORTHING (I-FT)	Δ EASTING (I-FT)	ODOT MAP STATION (I-FT)	18-14-12 OFFSET (I-FT)
100	2" BRASS DISK "DORTCH GRESDEL 1968" -0.5	SET IN CS 1350	268962.9487	4774424.2395	HELD	HELD	N/A	N/A
102	3/4" IP -1.0	SET IN CS 412	269558.7633	4774067.5626	HELD	HELD	N/A	N/A
104	1" IP -0.3	SET IN CS 1733	267187.9056	4775331.4197	+0.09	+0.43	N/A	N/A
109	#5 RB W/ YPC "TRU-LINE SURVEYING" -0.1	SET IN CS 5460	269239.7656	4773519.0216	N/A	N/A	2149+23.81	40.11 R
110	#5 RB W/ YPC "TRU-LINE SURVEYING" -0.4	SET IN CS 5460	269249.4603	4773515.5441	N/A	N/A	2149+13.51	40.13 R
111	2" IP	UNKNOWN	267188.3781	4775329.0316	+0.56	-1.96	N/A	N/A
112	#4 RB +0.2	UNKNOWN	266963.7081	4775558.5558	N/A	N/A	N/A	N/A
114	3" BRASS DISK +1.0	SET IN CS 1649	266985.7669	4770932.0317	HELD	HELD	N/A	N/A
202	1" IP	UNKNOWN	266905.8674	4776212.0637	N/A	N/A	N/A	N/A
203	#4 RB W/ RPC "ODOT"	ODOT CONTROL POINT	269699.7709	4773377.6963	N/A	N/A	2144+43.07	18.47 R
204	#4 RB -0.2	ODOT CONTROL POINT	267773.2829	4774054.9515	N/A	N/A	2164+80.67	39.82 R
205	MAG NAIL	ODOT CONTROL POINT	267094.3852	4774453.3965	N/A	N/A	2172+61.11	24.79 R
208	PK NAIL	ODOT CONTROL POINT	266968.0010	4774672.4458	N/A	N/A	2175+07.35	22.84 R
210	PK NAIL	ODOT CONTROL POINT	266979.5907	4774776.3028	N/A	N/A	2175+97.77	29.56 L
2001	#4 RB +0.1	UNKNOWN	271364.9914	4772844.9459	N/A	N/A	2126+95.68	39.98 L
2002	#5 RB -0.6	SET IN CS 1350	270377.8587	4772898.2626	N/A	N/A	2130+78.19	40.04 R
2003	#4 RB W/ 2" ALUMINUM DISK OFF BESIDE RB	SET IN CS 6110	270437.3112	4773090.6028	N/A	N/A	2136+51.94	40.74 R
2004	#4 RB	SET IN CS 961	270192.7323	4773178.2315	N/A	N/A	2139+11.74	40.49 R
2008	#4 RB -0.4	UNKNOWN	268045.3443	4773946.4476	N/A	N/A	2161+92.40	39.38 R
2013	2" BRASS DISK "DORTCH GRESDEL 1968" -1.2	SET IN CS 1350	271096.6584	4773232.1551	HELD	HELD	N/A	N/A
2014	#5 RB NO DISK -2.1	SET IN CS 1350	271003.9745	4772973.9645	-0.01	-0.04	2130+79.06	40.04 L
2015	2" BRASS DISK "DORTCH GRESDEL 1968" +0.9	SET IN CS 1350	269174.3222	4773542.5226	N/A	N/A	2149+93.34	40.00 R
2016	2" BRASS DISK "DORTCH GRESDEL 1968" BENT -1.0	SET IN CS 1350	268846.6249	4773744.6691	0.00	+0.15	2153+69.94	40.14 L
2051	#5 RB W/ YPC "LS 744" +0.6	SET IN CS 7156	268505.5153	4773781.3622	N/A	N/A	2157+03.52	40.05 R
2052	#5 RB W/ YPC "LS 744" +0.9	SET IN CS 7156	268364.5513	4773831.7355	N/A	N/A	2158+53.21	40.03 R
2063	2" IP	PLAT OF NORTH BLY	266953.7215	4774608.8981	HELD	HELD	N/A	N/A
2066	#5 RB W/ YPC "TRU-LINE SURVEYING"	SET IN CS 6049	266981.5922	4774891.5280	N/A	N/A	N/A	N/A
2067	#5 RB W/ YPC "TRU-LINE SURVEYING"	SET IN CS 6049	266980.7945	4774899.4899	N/A	N/A	N/A	N/A
2068	1" IRON AXLE -0.6	SET IN CS 1733	266987.9998	4775223.8404	N/A	N/A	N/A	N/A
2069	2" IP	FOUND IN CS 1733 & 6049	267113.5518	4775155.7708	N/A	N/A	N/A	N/A
CONTROL POINTS								
113	3" BRASS DISK	PID NY0877	277300.7366	4759153.4924	HELD	HELD	N/A	N/A
201	3" BRASS DISK IN BOULDER	PID NY0878	265195.2662	4778912.2588	HELD	HELD	N/A	N/A

COMPUTED POINTS

POINT	DESCRIPTION	NORTHING (I-FT)	EASTING (I-FT)
300	NE CORNER LOT 24 BY BEARING-BEARING INTERSECTION	267187.8201	4775330.9890
301	NW CORNER M70-545701 BY BEARING-BEARING INTERSECTION	271003.9622	4772973.9289
302	NW CORNER LOT J BY BEARING-BEARING INTERSECTION	268846.6224	4773744.5232
303	PROJECTED SOUTH R/W GARDEN AVE.	266947.7893	4775245.6410
304	INITIAL POINT OF PLAT BY DISTANCE-DISTANCE INTERSECTION	266944.8726	4775462.8814
305	30.00' RIGHT ANGLE OFFSET FROM 2067	266950.7960	4774899.1906
306	INTERSECTION C/L HWY 140 & SOUTH PLAT LINE	266952.1316	4774765.3116
307	SOUTH 1/4 CORNER SECTION 34 BY PROJECTING SOUTH PLAT LINE	266964.4504	4773573.4829
308	INTERSECTION N-S SECTION LINE & SOUTH R/W HWY 140 BY DISTANCE-BEARING INTERSECTION	269107.1762	4773566.5039
309	NW CORNER V. 234, P. 239 BY PROPORTIONATE MEASUREMENT	268468.9396	4773568.5827
310	SW CORNER V. 234, P. 239 BY PROPORTIONATE MEASUREMENT	268318.7304	4773569.0719
311	INTERSECTION NE PLAT LINE & PROJECTED NORTH DEED LINE	268838.2424	4774435.0004
312	SE CORNER LOT J BY PROPORTIONATE MEASUREMENT	268788.0730	4774462.2366
313	SW CORNER LOT J BY BEARING-DISTANCE ALONG WEST LINE	268469.9323	4773879.0764
314	SE CORNER LOT G BY PROPORTIONATE MEASUREMENT	268260.5149	4774748.6397
315	PROJECTED SOUTH R/W TANGENT HWY 140	267898.3546	4774083.2412
316	SE CORNER SECTION 34 BY PROJECTING SOUTH PLAT LINE	266937.1046	4776212.5512



SHEET 2 OF 3

DRAWING NO.: ROS.dwg	PREPARED FOR AND AT THE REQUEST OF	JOB NO.	06-039
DATE: APRIL 12, 2007	OREGON DEPARTMENT OF TRANSPORTATION	SCALE	SHOWN
REGISTERED PROFESSIONAL LAND SURVEYOR	LIABILITY FOR THIS SURVEY IS EXPRESSLY LIMITED TO SAID PERSON OR PERSONS.	CHECKED BY:	SDM
OREGON JANUARY 11, 2005	LOCATION:	DRAWN BY:	SDM
SCOTT D. MONTGOMERY 51,324	TAX LOT 1700 36 14 34DB	LEGEND:	RB = REBAR IP = IRON PIPE V. = VOLUME P. = PAGE CS = COUNTY SURVEY # L = LEFT R = RIGHT YPC = YELLOW PLASTIC CAP RPC = RED PLASTIC CAP R/W = RIGHT-OF-WAY C/L = CENTER LINE C = COMPUTED COURSE () = DEED RECORD [] = SURVEY RECORD
RENEWAL: 12/31/2008	SEC 34, T 36S, R 14E, W.M. CITY OF BLY, KLAMATH COUNTY, OREGON	ALL POINTS ENGINEERING & SURVEYING	Δ ODOT CONTROL POINT ■ MONUMENT FOUND AS NOTED ○ #5 X 24" RB SET & RPC "APES", EXCEPT AS NOTED

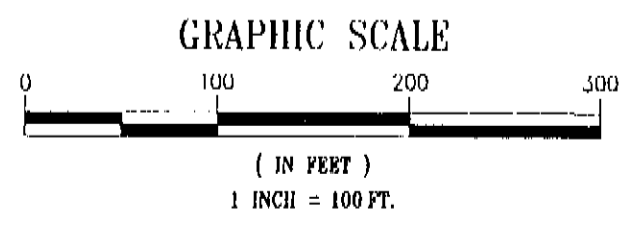
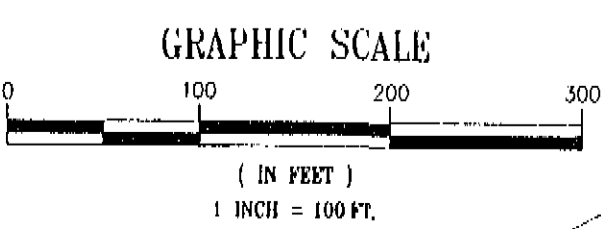
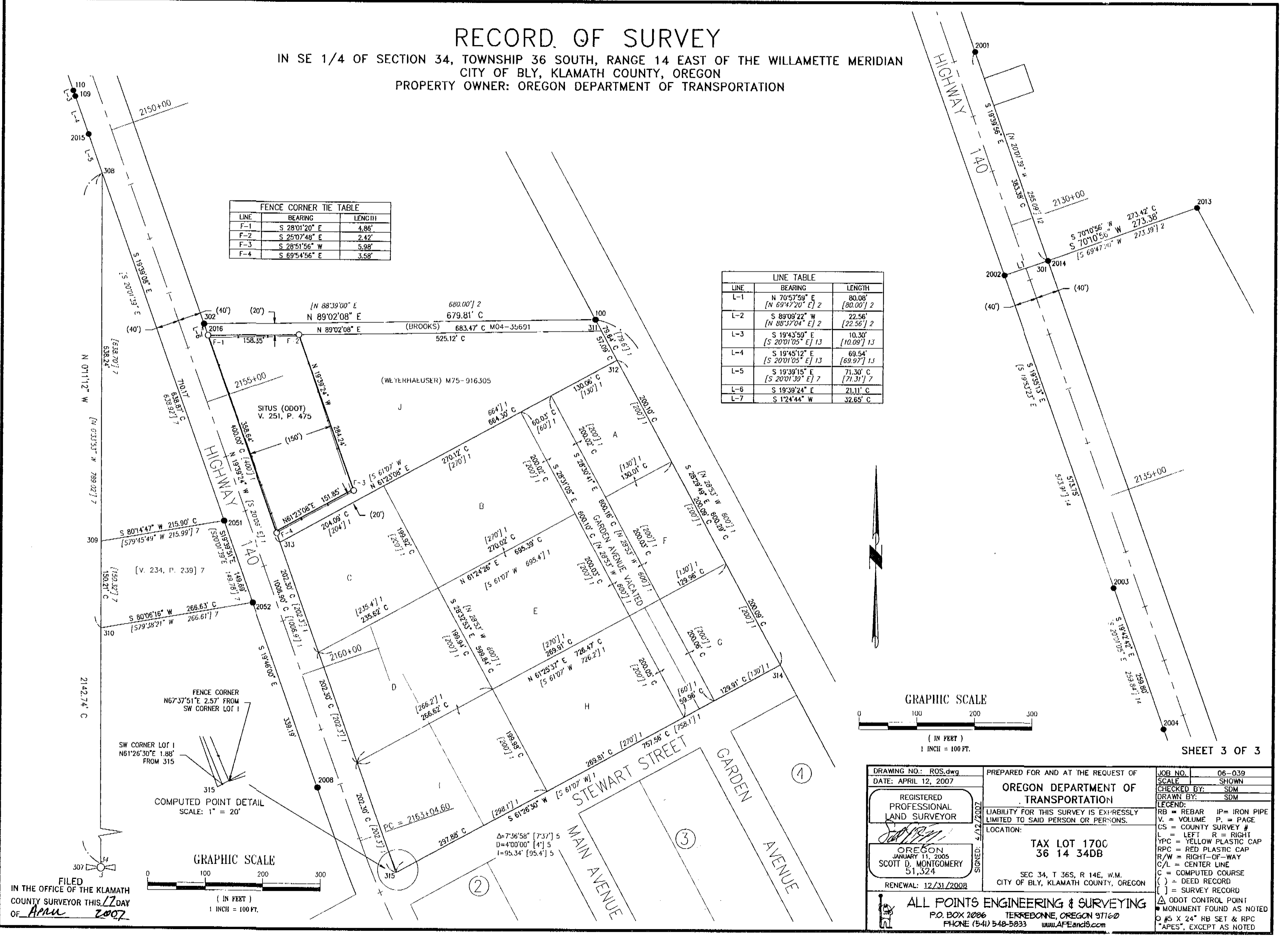
7389

RECORD OF SURVEY

IN SE 1/4 OF SECTION 34, TOWNSHIP 36 SOUTH, RANGE 14 EAST OF THE WILLAMETTE MERIDIAN
 CITY OF BLY, KLAMATH COUNTY, OREGON
 PROPERTY OWNER: OREGON DEPARTMENT OF TRANSPORTATION

LINE	BEARING	LENGTH
F-1	S 28°01'20" E	4.86'
F-2	S 25°07'48" E	2.42'
F-3	S 28°51'56" W	5.98'
F-4	S 69°54'56" E	3.58'

LINE	BEARING	LENGTH
L-1	N 70°57'59" E [N 69°47'20" E] 2	80.08' [80.00'] 2
L-2	S 89°08'22" W [N 88°37'04" E] 2	22.56' [22.56'] 2
L-3	S 19°43'59" E [S 20°01'05" E] 13	10.30' [10.09'] 13
L-4	S 19°45'12" E [S 20°01'05" E] 13	69.54' [69.97'] 13
L-5	S 19°39'15" E [S 20°01'39" E] 7	71.30' [71.31'] 7
L-6	S 19°39'24" E	21.11' C
L-7	S 1°24'44" W	32.65' C



SHEET 3 OF 3

7389
 FILED IN THE OFFICE OF THE KLAMATH COUNTY SURVEYOR THIS 12 DAY OF APRIL 2007

DRAWING NO.: ROS.dwg	PREPARED FOR AND AT THE REQUEST OF	JOB NO. 06-039
DATE: APRIL 12, 2007	OREGON DEPARTMENT OF TRANSPORTATION	SCALE SHOWN
REGISTERED PROFESSIONAL LAND SURVEYOR	LIABILITY FOR THIS SURVEY IS EXPRESSLY LIMITED TO SAID PERSON OR PERSONS.	CHECKED BY: SDM
SCOTT D. MONTGOMERY 51,324	LOCATION: TAX LOT 1700 36 14 34DB	DRAWN BY: SDM
RENEWAL: 12/31/2008	SEC 34, T 36S, R 14E, W.M. CITY OF BLY, KLAMATH COUNTY, OREGON	LEGEND:
		RB = REBAR IP = IRON PIPE V. = VOLUME P. = PAGE CS = COUNTY SURVEY # L = LEFT R = RIGHT YPC = YELLOW PLASTIC CAP R/W = RIGHT-OF-WAY C/L = CENTER LINE C = COMPUTED COURSE () = DEED RECORD [] = SURVEY RECORD Δ = ODOT CONTROL POINT * = MONUMENT FOUND AS NOTED ○ #5 X 24" RB SET & RPC "APES", EXCEPT AS NOTED
ALL POINTS ENGINEERING & SURVEYING		
P.O. BOX 2006 TERREBONNE, OREGON 97160		
PHONE (541) 548-5833 www.APEandS.com		